

## Vacancies in the occupational group 'Executives - geriatric care' in the city/region of District of North Friesland and surroundings

Currently, there are [50 vacancies](#).

On 27./28.03.2024, [1 new vacancies](#) were published.

### Practical service for the job search

The Jobcentre offers a practical service for all persons on job search: the JobNews in the JobZENTRALE. At a glance, it becomes clear in which areas of the labor market are opportunities. For the entire region.

### Automatic search

The JobZENTRALE researches automatically every day new vacancies from the entire region. In addition, vocational training opportunities. In the section jobNEWSLocal, a separate own job list can be viewed and printed out as a PDF.

### Content of this edition:

Overview . . . . .	2
Current jobs . . . . .	4
Vacancies dynamics . . . . .	10
Imprint, Legal Notice . . . . .	15



### Similar job advertisements

JobZENTRALE offers a special service: similar job advertisements are grouped into professional groups. This makes the search much easier, since you can invoke all job advertisements directly from a similar area. The PDF for each professional group makes it even easier.

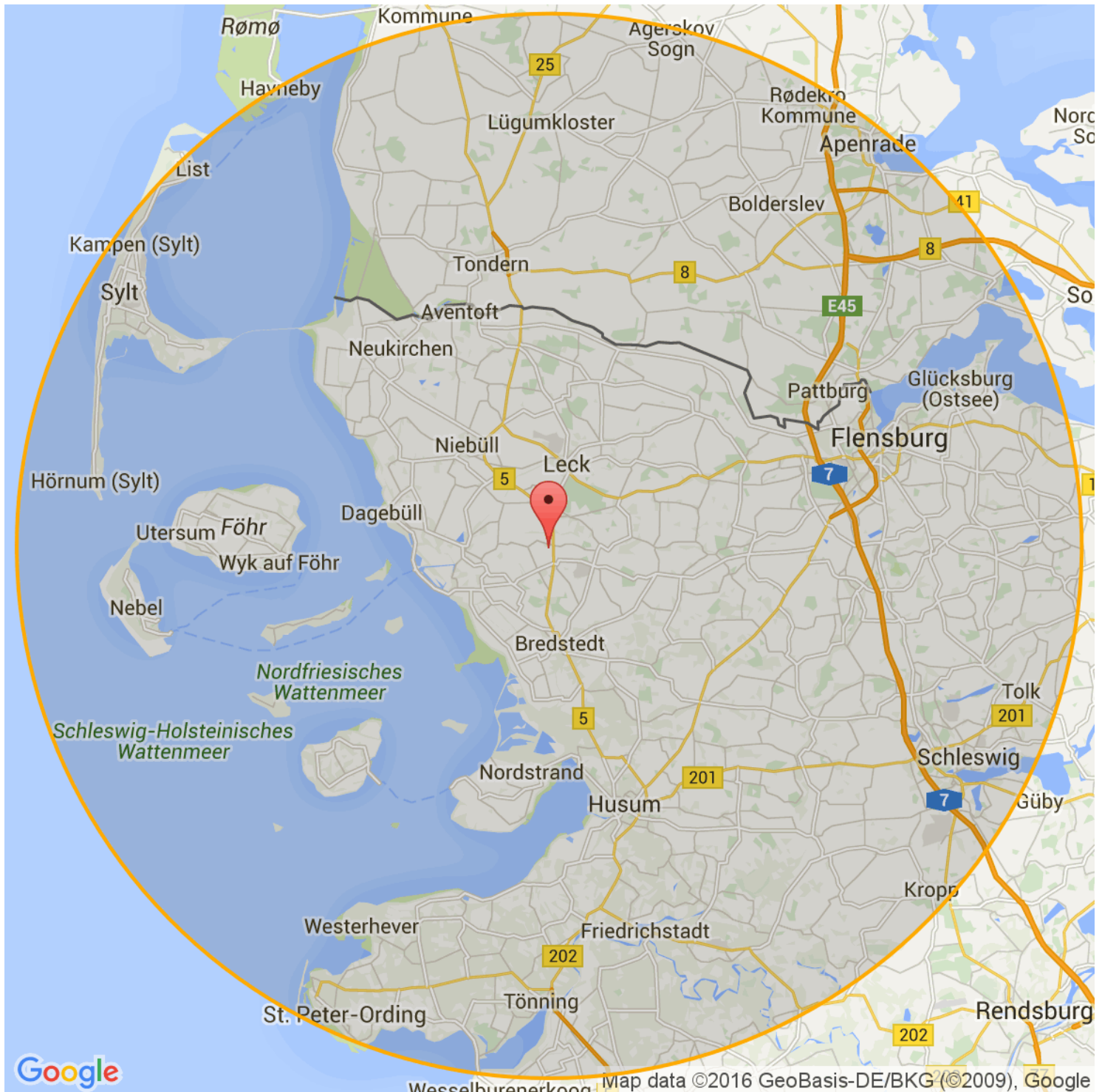


# jobNEWSOccupation

Executives - geriatric care

Editor: bb company for work and education Ltd · daily updated · 28 March 2024

**jobNEWSOccupation offers vacancies in the occupational group 'Executives - geriatric care' from the following region:**



## Examples of professions for the occupational group 'Executives - geriatric care':

**Leiter/in - Altenpflegeeinrichtung**

**Altenheimleiter/in**

**Altentagesstättenleiter/in**

**Altenzentrumsleiter/in**

**Einrichtungsleiter/in - Altenheim**

**Geschäftsführende/r Leiter/in (Altenheim)**

**Hausleiter/in (Altenheim)**

**Pflegeheimleiter/in**

**Seniorenheimleiter/in**

**Seniorentagesstättenleiter/in**

**Seniorenzentrumsleiter/in**



## Current jobs for the occupational group 'Executives - geriatric care' in the city/region of District of North Friesland and surroundings

The job ads are ordered by posting date. The newest job ads are at the top. Z = temporary employment. P = personnel consulting/ private employment agency. G = marginal employment. A = apprenticeship.

### 50 jobs for the occupational group 'Executives - geriatric care':

1	27.03.2024	<b>Wohnbereichsleitung (m/w/d)</b> Flensburg - Holländerhof Flensburg - Flensburg <a href="https://www.jobnews.info/nf-en/922706163">https://www.jobnews.info/nf-en/922706163</a>	
2	26.03.2024	<b>Einrichtungsleitung / Heimleitung (m/w/d) für Seniorenresidenz</b> Risum-Lindholm - Unternehmens- Personalberatung Daniel Ehrend <a href="https://www.jobnews.info/nf-en/922593199">https://www.jobnews.info/nf-en/922593199</a>	
3	25.03.2024	<b>Praxisanleiter/Altenpfleger (m/w/x) in Tarp</b> Flensburg - CURA Pflegezentrum Tarp GmbH <a href="https://www.jobnews.info/nf-en/922368264">https://www.jobnews.info/nf-en/922368264</a>	<b>G</b>
4	25.03.2024	<b>Wohnbereichsleitung (m/w/d)</b> Ascheffel, 24358 - Stella Vitalis Seniorenzentrum Swisttal GmbH <a href="https://www.jobnews.info/nf-en/922368294">https://www.jobnews.info/nf-en/922368294</a>	<b>G</b>
5	25.03.2024	<b>Praxisanleiter/Altenpfleger (m/w/x) in Tarp</b> Schleswig, 24837 - CURA Pflegezentrum Tarp GmbH <a href="https://www.jobnews.info/nf-en/922368652">https://www.jobnews.info/nf-en/922368652</a>	<b>G</b>
6	25.03.2024	<b>Einrichtungsleitung (m/w/d)</b> Ascheffel, 24358 - Stella Vitalis Seniorenzentrum Swisttal GmbH <a href="https://www.jobnews.info/nf-en/922368766">https://www.jobnews.info/nf-en/922368766</a>	<b>G</b>
7	25.03.2024	<b>Wir suchen zu sofort eine Pflegefachkraft als Wohnbereichsleitung (Altenpfleger/in)</b> Schleswig-Flensburg - Free-Care Pflegebetriebe GmbH <a href="https://www.jobnews.info/nf-en/922569023">https://www.jobnews.info/nf-en/922569023</a>	
8	25.03.2024	<b>Wohnbereichsleitung (m/w/d) (Erwachsenenheimleiter/in)</b> Schleswig-Flensburg - Seniorenzentrum Haus am Mühlenstrom <a href="https://www.jobnews.info/nf-en/922572876">https://www.jobnews.info/nf-en/922572876</a>	
9	25.03.2024	<b>stellv. Pflegedienstleitung (m/w/d) mit Zusatzqualifikation Wohnbereichsleitung (Pflegedienstleiter/in)</b> Schleswig-Flensburg - Seniorenzentrum Haus am Loeperplatz <a href="https://www.jobnews.info/nf-en/922572881">https://www.jobnews.info/nf-en/922572881</a>	

## 50 jobs for the occupational group 'Executives - geriatric care':

10	25.03.2024	<b>Einrichtungsleitung (m/w/d) (Pflegedienstleiter/in)</b> Nordfriesland - pluss Personalmanagement GmbH <a href="https://www.jobnews.info/nf-en/922575970">https://www.jobnews.info/nf-en/922575970</a>	<b>Z</b>
11	23.03.2024	<b>Wohnbereichsleitung (m/w/d) 3.800 € Einstiegsgehalt</b> Ellhöft - RECRUTIO GMBH <a href="https://www.jobnews.info/nf-en/922592968">https://www.jobnews.info/nf-en/922592968</a>	
12	23.03.2024	<b>Pflegefachkraft als Wohnbereichsleitung (m/w/d) 4.000 € Gehalt</b> Enge-Sande - RECRUTIO GMBH <a href="https://www.jobnews.info/nf-en/922592969">https://www.jobnews.info/nf-en/922592969</a>	
13	23.03.2024	<b>Pflegefachkraft als Wohnbereichsleitung (m/w/d) 3.700 € Gehalt</b> Kappeln, Schleswig-Flensburg - RECRUTIO GMBH <a href="https://www.jobnews.info/nf-en/922594768">https://www.jobnews.info/nf-en/922594768</a>	
14	23.03.2024	<b>Pflegefachkraft als Wohnbereichsleitung (m/w/d) 3.500 € Einstiegsgehalt</b> Nottfeld - RECRUTIO GMBH <a href="https://www.jobnews.info/nf-en/922595062">https://www.jobnews.info/nf-en/922595062</a>	
15	20.03.2024	<b>Einrichtungsleiter (m/w/d) stationäre Einrichtung</b> 25746 Heide, Holstein - rocket match powered by notificAI GmbH <a href="https://www.jobnews.info/nf-en/922097487">https://www.jobnews.info/nf-en/922097487</a>	
16	19.03.2024	<b>Wohnbereichsleitung (m/w/d) - Heide</b> 25746 Heide, Holstein - Domicil - Seniorenpflegeheim Am Markt GmbH <a href="https://www.jobnews.info/nf-en/922097609">https://www.jobnews.info/nf-en/922097609</a>	
17	19.03.2024	<b>Pflegefachkraft - Wohnbereichsleitung (m/w/d)</b> Heide - WH Care Holding GmbH <a href="https://www.jobnews.info/nf-en/922590671">https://www.jobnews.info/nf-en/922590671</a>	
18	18.03.2024	<b>Einrichtungsleitung (m/w/d)</b> Sprakebüll, 25917 - Seniorenzentrum Haus am Lecker Mühlenstrom <a href="https://www.jobnews.info/nf-en/921720495">https://www.jobnews.info/nf-en/921720495</a>	<b>G</b>
19	18.03.2024	<b>stellv. Pflegedienstleitung (m/w/d) mit Zusatzqualifikation Wohnbereichsleitung</b> 24980 Hörup - Seniorenzentrum Haus am Mühlenstrom <a href="https://www.jobnews.info/nf-en/922097767">https://www.jobnews.info/nf-en/922097767</a>	<b>G</b>
20	15.03.2024	<b>Einrichtungsleitung (m/w/d)</b> 25917 Achtrup - Seniorenzentrum Haus am Lecker Mühlenstrom <a href="https://www.jobnews.info/nf-en/921616127">https://www.jobnews.info/nf-en/921616127</a>	<b>G</b>

## 50 jobs for the occupational group 'Executives - geriatric care':

21	14.03.2024	<b>Einrichtungsleitung (m/w/d)</b> Leck - Seniorenzentrum Haus am Lecker Mühlenstrom <a href="https://www.jobnews.info/nf-en/921365696">https://www.jobnews.info/nf-en/921365696</a>	
22	14.03.2024	<b>Wohnbereichsleitung (m/w/d) stationär</b> 24358 Ascheffel - rocket match powered by notificAI GmbH <a href="https://www.jobnews.info/nf-en/921458497">https://www.jobnews.info/nf-en/921458497</a>	
23	14.03.2024	<b>Wohnbereichsleitung (m/w/d) in Vollzeit</b> 24960 Glücksburg (Ostsee) - DRK-Kreisverband Schleswig-Flensburg e.V. <a href="https://www.jobnews.info/nf-en/921468637">https://www.jobnews.info/nf-en/921468637</a>	
24	13.03.2024	<b>Einrichtungsleiter (m/w/d) stationäre Einrichtung</b> Flensburg - rocket match powered by notificAI GmbH <a href="https://www.jobnews.info/nf-en/922706192">https://www.jobnews.info/nf-en/922706192</a>	
25	12.03.2024	<b>stellv. Wohnbereichsleiter *in (m/w/d)</b> Heide - AWO-Bezirksverband Braunschweig e.V. <a href="https://www.jobnews.info/nf-en/922590051">https://www.jobnews.info/nf-en/922590051</a>	
26	11.03.2024	<b>Einrichtungsleitung (m/w/d)</b> 25899 Niebüll - inCare by Piening <a href="https://www.jobnews.info/nf-en/920970844">https://www.jobnews.info/nf-en/920970844</a>	<b>G</b>
27	08.03.2024	<b>Einrichtungsleitung (m/w/d)</b> 24367 Osterby bei Eckernförde - pluss Personalmanagement GmbH career people Hamburg <a href="https://www.jobnews.info/nf-en/919303956">https://www.jobnews.info/nf-en/919303956</a>	<b>Z</b>
28	08.03.2024	<b>Einrichtungsleitung (m/w/d)</b> 25899 Niebüll - pluss Personalmanagement GmbH career people Hamburg <a href="https://www.jobnews.info/nf-en/919310884">https://www.jobnews.info/nf-en/919310884</a>	<b>Z</b>
29	07.03.2024	<b>Pflegedienstleitung - PDL (m/w/d) Interim - Reisetätigkeit Norddeutschland - Altenpflege</b> 25813 Husum, Nordsee, 24536 Neumünster, Holstein, 24768 Rendsburg, 24941 Flensburg, 23552 Lübeck, 22846 Norderstedt, 20095 Hamburg, 24837 Schleswig, 24105 Kiel, 23701 Eutin - VIF Personalvermittlung in Festanstellung Volker Bronheim <a href="https://www.jobnews.info/nf-en/920533771">https://www.jobnews.info/nf-en/920533771</a>	



## 50 jobs for the occupational group 'Executives - geriatric care':

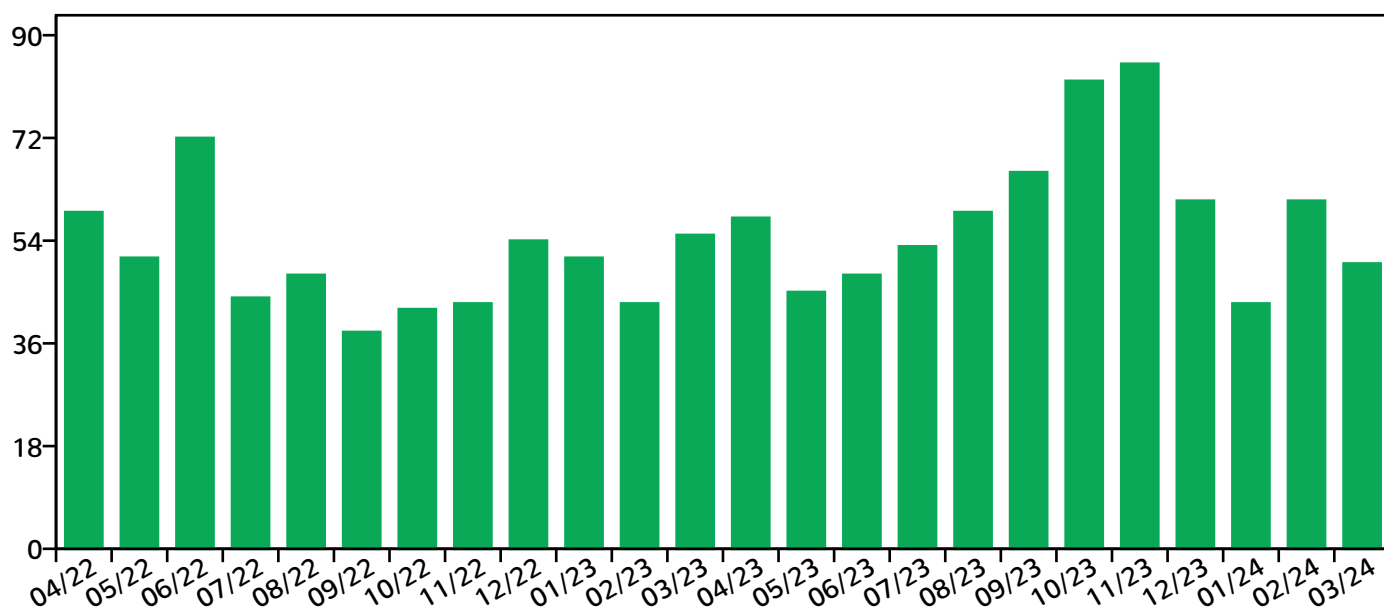
30	07.03.2024	<b>Pflegedienstleitung - PDL (m/w/d) Interim - Reisetätigkeit Norddeutschland - Altenpflege</b> 25899 Niebüll, 23909 Ratzeburg, 22926 Ahrensburg, 25335 Elmshorn, 24568 Kaltenkirchen, Holstein, 25746 Heide, Holstein, 25524 Itzehoe, 23758 Oldenburg in Holstein, 23795 Bad Segeberg, 24340 Eckernförde - VIF Personalvermittlung in Festanstellung Volker Bronheim <a href="https://www.jobnews.info/nf-en/920542888">https://www.jobnews.info/nf-en/920542888</a>	
31	05.03.2024	<b>Wohnbereichsleitung(m/w/d) Glücksburg</b> Glücksburg - DRK-Kreisverband Schleswig-Flensburg e. V. <a href="https://www.jobnews.info/nf-en/922705569">https://www.jobnews.info/nf-en/922705569</a>	
32	03.03.2024	<b>Wohnbereichsleitung (m/w/d) stationär im familiären Umfeld</b> 25813 Husum, Nordsee - rocket match powered by notificAI GmbH <a href="https://www.jobnews.info/nf-en/920733023">https://www.jobnews.info/nf-en/920733023</a>	
33	01.03.2024	<b>Wohnbereichsleitung (m/w/d)</b> Hörup - de.jobble.org <a href="https://www.jobnews.info/nf-en/922594782">https://www.jobnews.info/nf-en/922594782</a>	
34	25.02.2024	<b>Einrichtungsleitung (m/w/d) für stationäre Einrichtung</b> 25899 Niebüll - rocket match powered by notificAI GmbH <a href="https://www.jobnews.info/nf-en/919663315">https://www.jobnews.info/nf-en/919663315</a>	
35	25.02.2024	<b>Einrichtungsleitung (m/w/d) stationäre Einrichtung</b> 24937 Flensburg - rocket match powered by notificAI GmbH <a href="https://www.jobnews.info/nf-en/919709964">https://www.jobnews.info/nf-en/919709964</a>	
36	25.02.2024	<b>Wohnbereichsleitung (m,w,d) in Vollzeit</b> Husum, Nordfriesland - DRK Kreisverband Nordfriesland e.V. <a href="https://www.jobnews.info/nf-en/922593239">https://www.jobnews.info/nf-en/922593239</a>	
37	23.02.2024	<b>Einrichtungsleitung (m/w/d)</b> 25899 Bosbüll - pluss Personalmanagement GmbH <a href="https://www.jobnews.info/nf-en/919310882">https://www.jobnews.info/nf-en/919310882</a>	<b>Z</b>
38	23.02.2024	<b>Einrichtungsleitung (m/w/d)</b> 24367 Osterby bei Eckernförde - pluss Personalmanagement GmbH <a href="https://www.jobnews.info/nf-en/919311636">https://www.jobnews.info/nf-en/919311636</a>	<b>Z</b>
39	22.02.2024	<b>Stellvertretende Pflegedienstleitung (m/w/d) mit Zusatzqualifikation Wohnbereichsleitung</b> Hörup, Schafflund - Seniorenzentrum Haus am Mühlenstrom <a href="https://www.jobnews.info/nf-en/919296675">https://www.jobnews.info/nf-en/919296675</a>	

## 50 jobs for the occupational group 'Executives - geriatric care':

40	22.02.2024	<b>Wohnbereichsleitung (m/w/d)</b> Schafflund - Seniorenzentrum Haus am Mühlenstrom <a href="https://www.jobnews.info/nf-en/919296676">https://www.jobnews.info/nf-en/919296676</a>
41	01.02.2024	<b>Wohnbereichsleitung (m,w,d) in Vollzeit Käthe-Bernhard-Haus</b> 25813 Husum, Nordsee - DRK Kreisverband NF Verwaltung <a href="https://www.jobnews.info/nf-en/915531217">https://www.jobnews.info/nf-en/915531217</a>
42	27.01.2024	<b>Wohnbereichsleitung (m/w/d) für das Gotthard-und-Anna-Hansen-Stift</b> Flensburg - Diako <a href="https://www.jobnews.info/nf-en/922705540">https://www.jobnews.info/nf-en/922705540</a>
43	26.01.2024	<b>stellv. Pflegedienstleitung / Wohnbereichsleitung (m/w/d) in Vollzeit gesucht</b> Struckum - DRK Kreisverband Nordfriesland e.V. <a href="https://www.jobnews.info/nf-en/922593159">https://www.jobnews.info/nf-en/922593159</a>
44	26.01.2024	<b>Wohnbereichsleitungen (m/w/d)</b> Wyk auf Föhr - Johanniter-Unfall-Hilfe <a href="https://www.jobnews.info/nf-en/922593469">https://www.jobnews.info/nf-en/922593469</a>
45	26.01.2024	<b>Wohnbereichsleitung(m/w/d) Fahrdorf</b> Fahrdorf - DRK-Kreisverband Schleswig-Flensburg e. V. <a href="https://www.jobnews.info/nf-en/922594776">https://www.jobnews.info/nf-en/922594776</a>
46	26.01.2024	<b>Wohnbereichsleitung für den Eingliederungsbereich</b> Schleswig - Levenslund <a href="https://www.jobnews.info/nf-en/922595096">https://www.jobnews.info/nf-en/922595096</a>
47	11.01.2024	<b>Einrichtungsleitung (m/w/d) in Husum</b> 25813 Husum, Nordsee - DRK Kreisverband NF Verwaltung <a href="https://www.jobnews.info/nf-en/911981781">https://www.jobnews.info/nf-en/911981781</a>
48	11.01.2024	<b>Einrichtungsleitung (m,w,d)</b> Husum - DRK Kreisverband Nordfriesland e.V. <a href="https://www.jobnews.info/nf-en/911987520">https://www.jobnews.info/nf-en/911987520</a>
49	11.01.2024	<b>Einrichtungsleitung (m/w/d) in Husum</b> Husum, Nordfriesland - DRK-Kreisverband Nordfriesland e.V. <a href="https://www.jobnews.info/nf-en/915118958">https://www.jobnews.info/nf-en/915118958</a>
50	10.01.2024	<b>Wohnbereichsleiter *in</b> Heide - AWO <a href="https://www.jobnews.info/nf-en/911834066">https://www.jobnews.info/nf-en/911834066</a>



### Vacancies dynamics in the occupational group 'Executives - geriatric care' in District of North Friesland and surroundings



### Regional distribution of vacancies for 'Executives - geriatric care':

Achtrup	3	Kropp	2
Ascheffel	4	Leck	1
Bosbüll	1	Niebüll	6
Böklund	1	Nordfriesland	18
Fahrdorf	1	Nottfeld	1
Flensburg	4	Osterby bei Eckernförde	2
Glücksburg/Ostsee	1	Schafflund	6
Heide	5	Schleswig-Flensburg	16
Hemme	1	Sprakebüll	1
Husum	6	Tarp	1
Hörup	2		

# jobNEWSOccupation

Executives - geriatric care

Editor: bb company for work and education Ltd · daily updated · 28 March 2024

## Vacancies dynamics in the last 24 months

### Occupation charts: top 1-10 for District of North Friesland and surroundings

Sales (general) - skilled workers

Health care and nursing (general) - skilled workers

Cooks (general) - skilled workers

Cleaning (general) - helpers

Hotel service - skilled workers

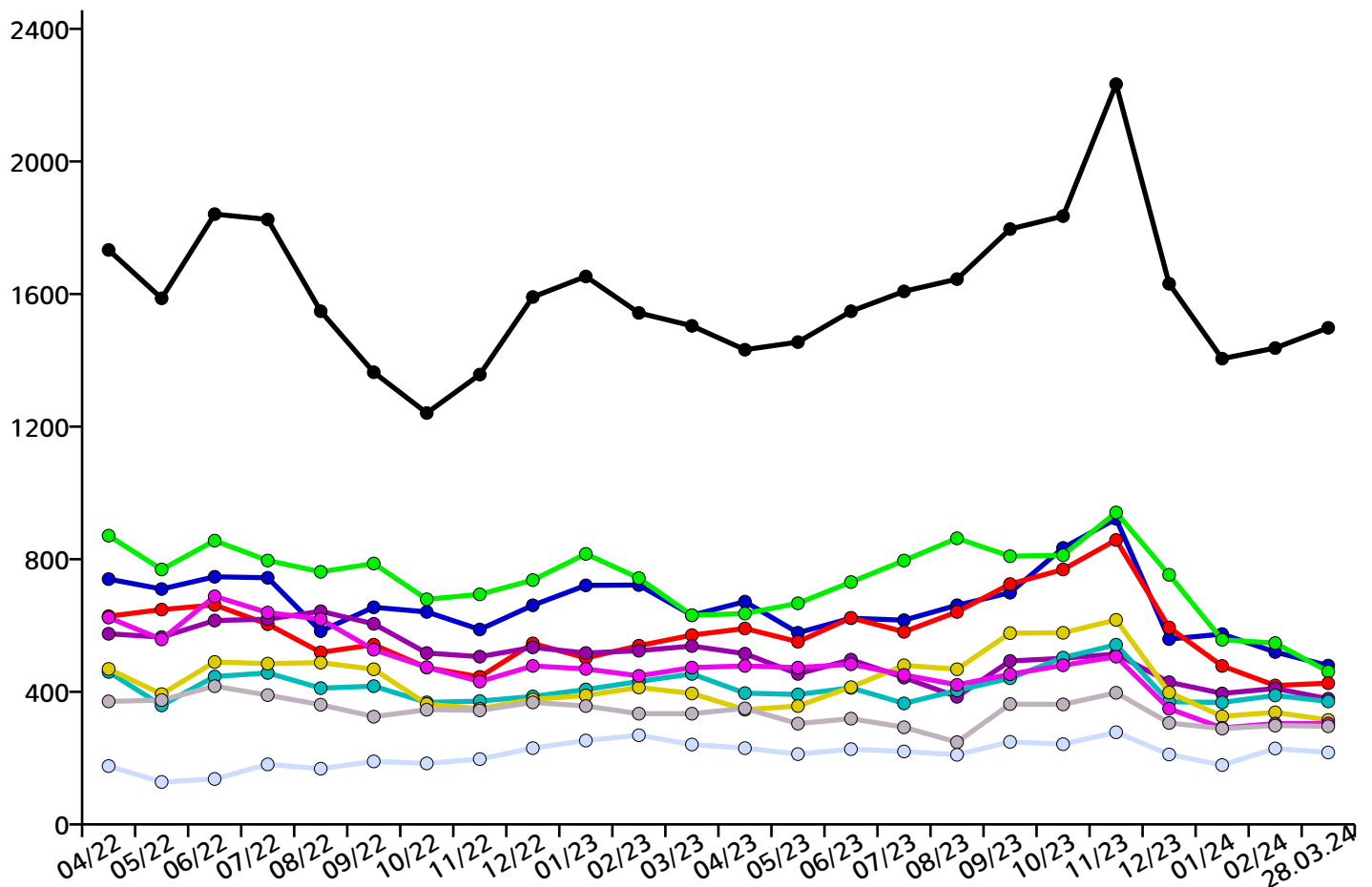
Office and secretariat (general) - skilled workers

Childcare and education - skilled workers

Warehouse management - skilled workers

Gastronomy service (general) - skilled workers

Mechatronics - skilled workers





# jobNEWSOccupation

Executives - geriatric care

Editor: bb company for work and education Ltd · daily updated · 28 March 2024

## Occupation charts: top 11-20 for District of North Friesland and surroundings

Motor vehicle technology - skilled workers

Mechanical and industrial engineering (general) - skilled workers

Sale of food products (general) - skilled workers

Executives - sales

Tax consulting - skilled workers

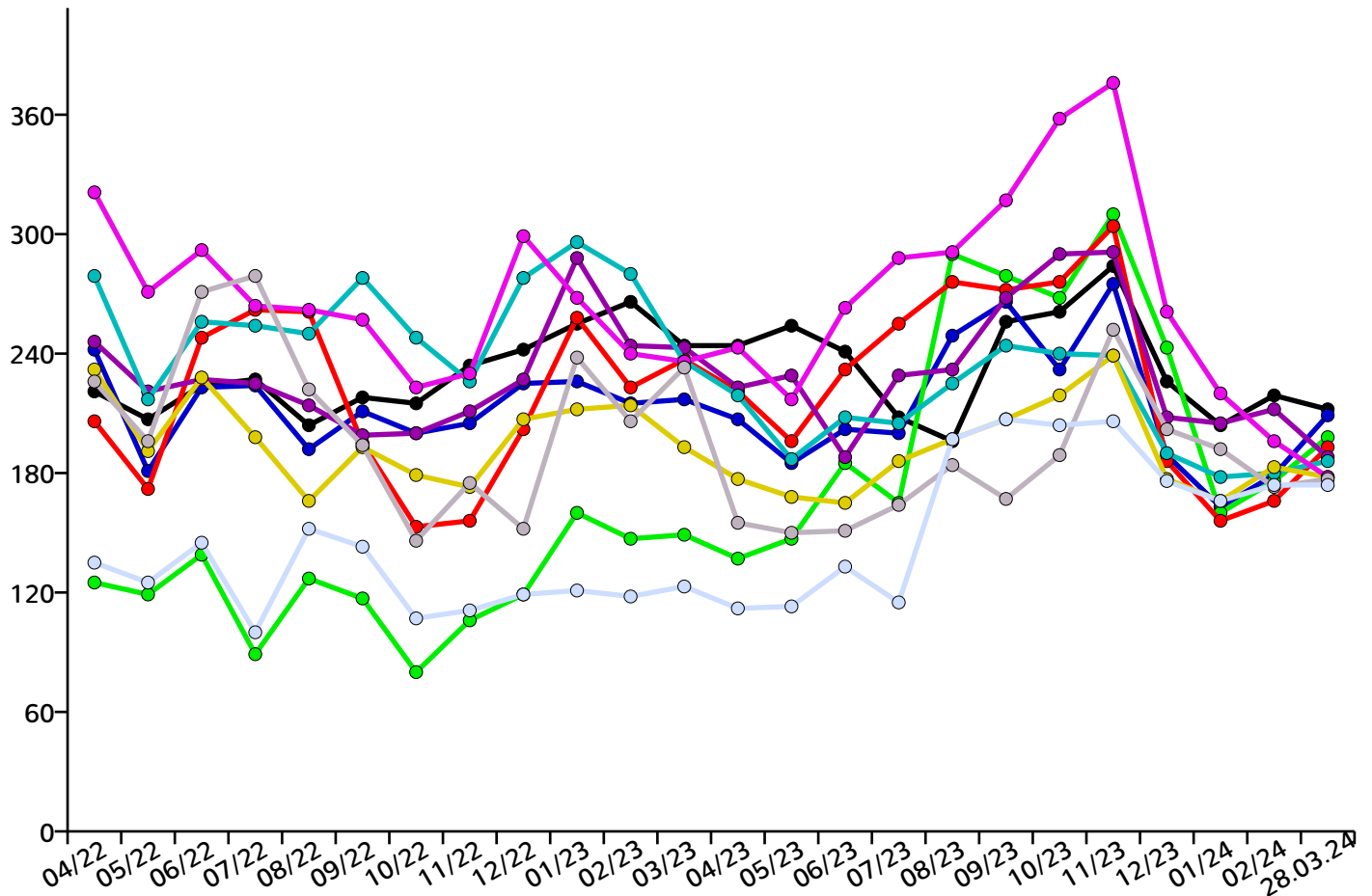
Building electrics - skilled workers

Mechanical and industrial engineering (general) - specialists

Doctors (general) - experts

Professions in distribution (excluding ICT) - specialists

Sale of food products (other) - skilled workers



# jobNEWSOccupation

Executives - geriatric care

Editor: bb company for work and education Ltd · daily updated · 28 March 2024

## Occupation charts: top 21-30 for District of North Friesland and surroundings

Professional drivers (freight transport/trucks) - skilled workers

Merchants in trade (general) - specialists

Metal construction - skilled workers

Gastronomy service (general) - helpers

Accounting - specialists

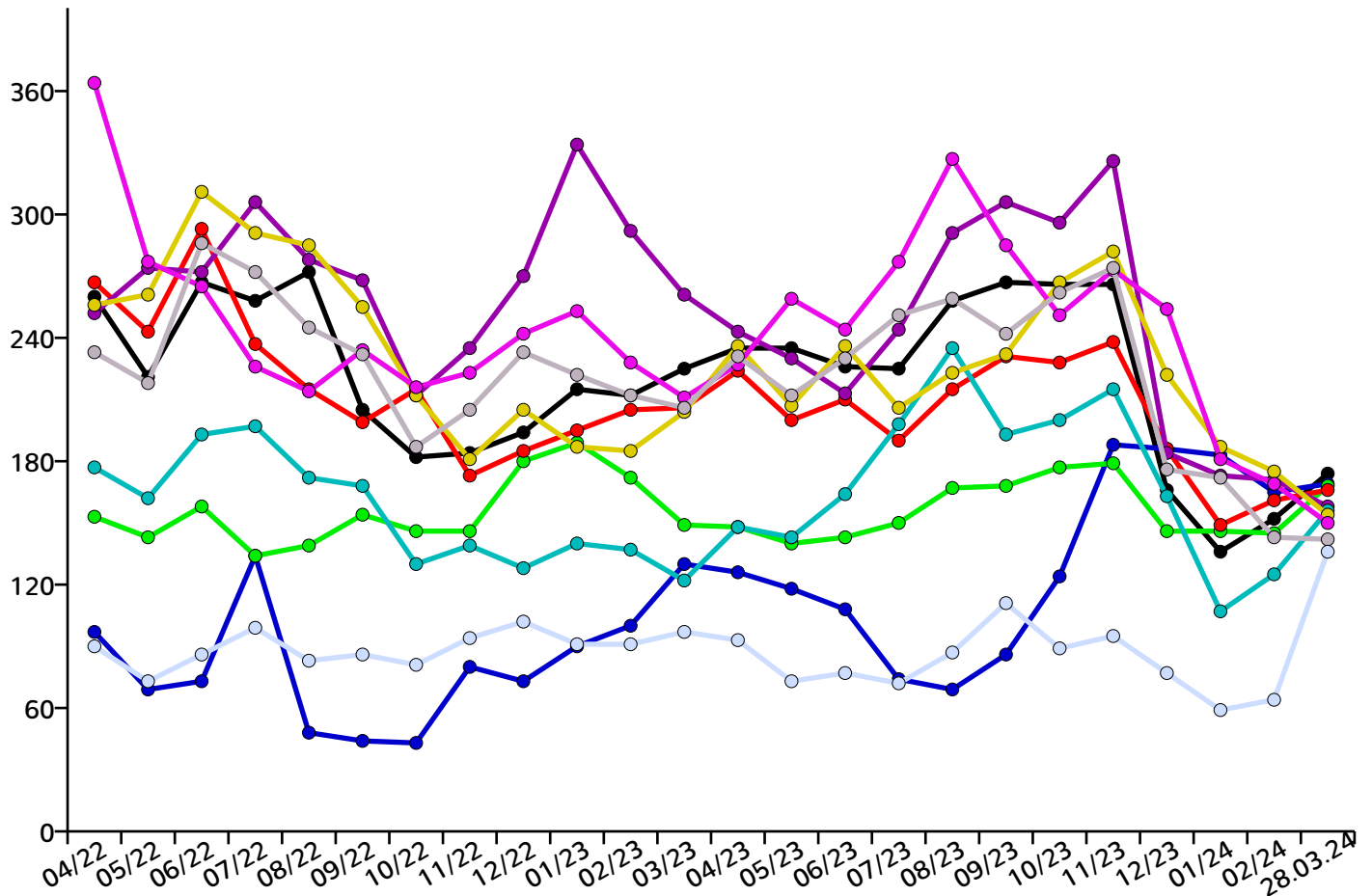
Cashiers and ticket sellers - skilled workers

Cooks (general) - helpers

Geriatric care (general) - skilled workers

Warehouse management - helpers

Electrical industrial engineering - skilled workers





# jobNEWSOccupation

Executives - geriatric care

Editor: bb company for work and education Ltd · daily updated · 28 March 2024

## Occupation charts: top 31-40 for District of North Friesland and surroundings

Health care and nursing (general) - helpers

Hotel service - helpers

Information and telecommunications technology - skilled workers

Medical staff (general) - skilled workers

Sale of meat products - skilled workers

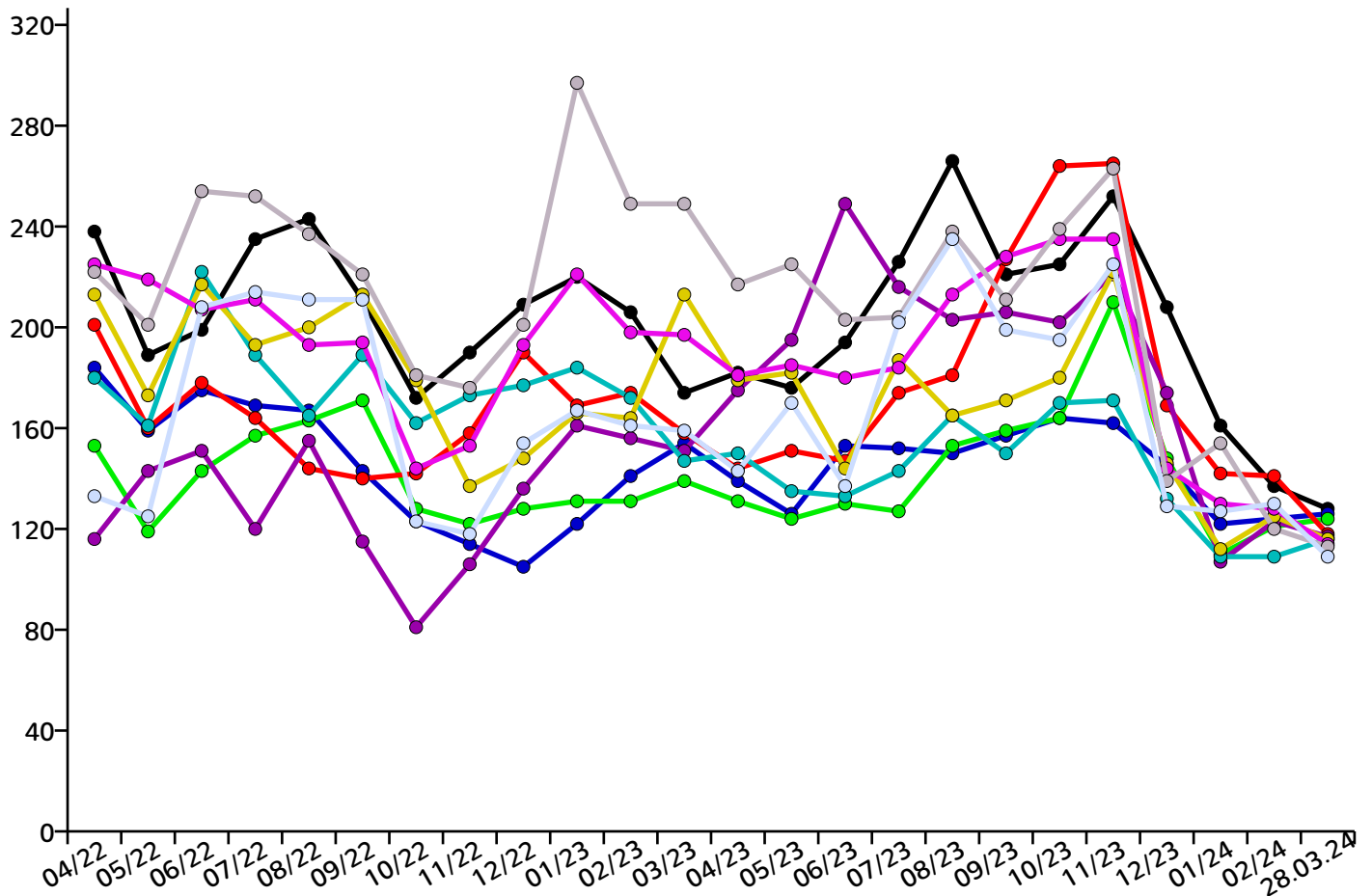
Production (general) - helpers

Social work and social pedagogy - specialists

Supervisors - business organization and strategy

Professions in distribution (excluding ICT) - skilled workers

Sales (general, other) - specialists



# jobNEWSOccupation

Executives - geriatric care

Editor: bb company for work and education Ltd · daily updated · 28 March 2024

## Occupation charts: top 41-50 for District of North Friesland and surroundings

Sales (general) - helpers

Technical service staff in maintenance and repair - skilled workers

Physiotherapy - specialists

Merchants in wholesale and international trade - skilled workers

Executives - business organization and strategy

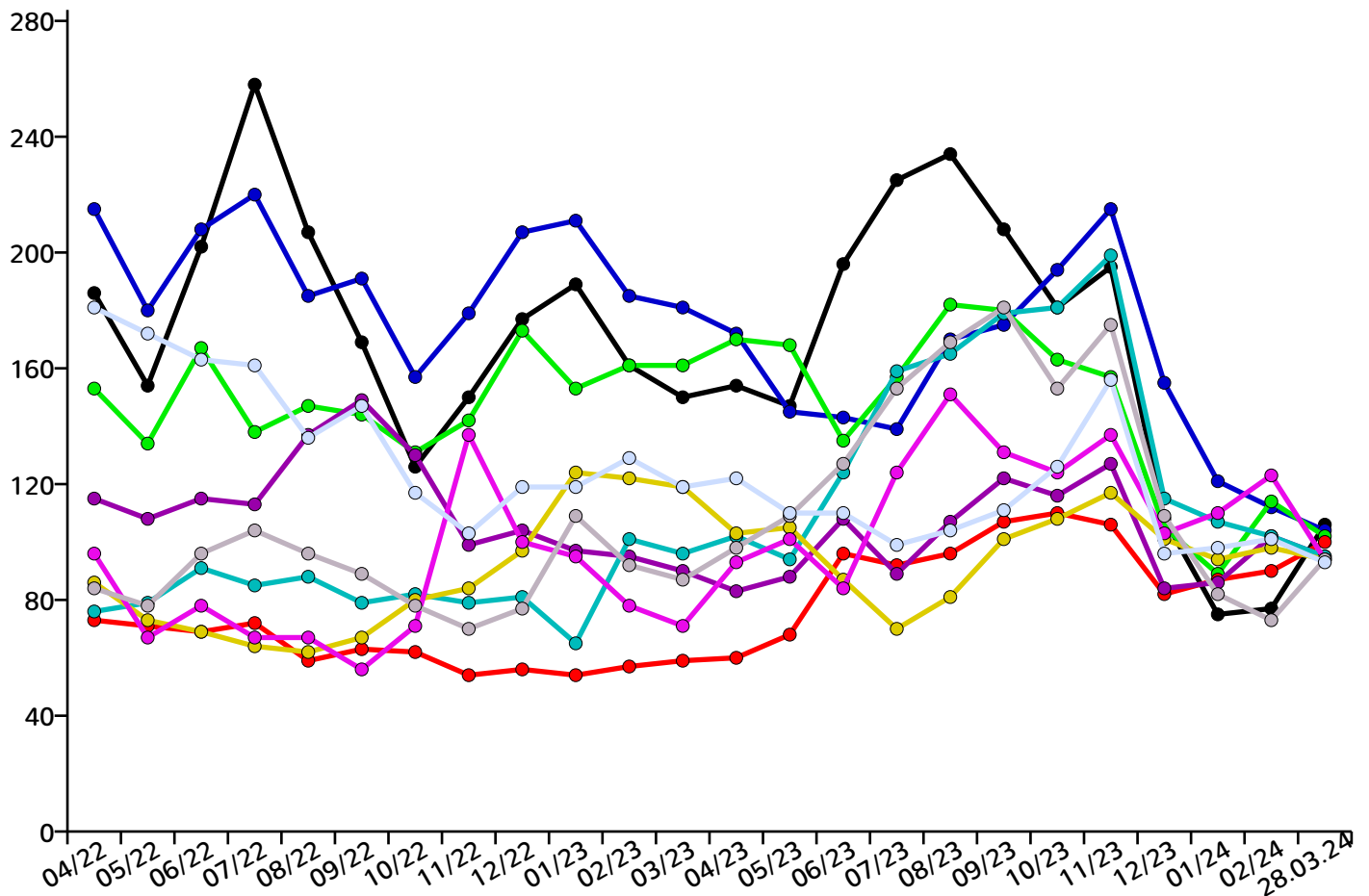
Geriatric care (general) - helpers

Sale of baked goods and confectionery products - skilled workers

Building services engineering (general) - skilled workers

Mail and delivery - helpers

Dentists - skilled workers







# jobNEWSOccupation

Executives - geriatric care

Editor: bb company for work and education Ltd · daily updated · 28 March 2024

## Imprint, Legal Notice

### Imprint

bb gesellschaft für beruf + bildung mbh schleswig-holstein  
(bb company for work and education Ltd schleswig-holstein)  
Schiffbrücke 50  
24939 Flensburg  
[www.bb-gesellschaft.de](http://www.bb-gesellschaft.de)

Technical implementation and copyright  
Jobnet.AG, Luisenstraße 41, 10117 Berlin, [www.jobnet.ag](http://www.jobnet.ag)  
Contact: Friedrich Schreibert E-mail: [fs@jobnet.ag](mailto:fs@jobnet.ag), Telephone: 030.5 77 00 12-70

### Legal Notice

You may copy and distribute the files of this website for all non-commercial purposes, (for example by e-mail). Copies of the files or copies of the printout of the data can also be passed and be open to public. Any form of resale or technical reusing in database systems of here presented services or the offered content is prohibited.

The included job offers from JobNEWS are automatically collected, analyzed and tagged. Therefore, we cannot individually and manually to check all job offers. We update daily several million entries in our system. It can happen, in some cases that the displayed job offers are not in accordance with the category described or regional association. Job offers cannot be reusable, if they are no longer current. JobNEWS is protected by copyright regarding the content and presentation. The jobNEWS is a non-binding information service and is not binding placement proposal in the sense of SGB II.

Photo by © JackF - Fotolia.com

Bild von © Brocreative - Fotolia.com

## Notes on actuality of the jobs

The shown job offers are currently daily compiled by our specialist on the european labour market online search system. If a printed JobNEWS copy is already older, it may happen that the job offers are no longer available because they are already outdated. In this case, please get on this page a current JobNEWS copy. We can not guarantee that we have found a full 100% of all published job advertisements and have published them here. If you have the impression, that we have overlooked important sources, please let us a notice at: [info@jobnet.ag](mailto:info@jobnet.ag). Thank you very much.



# jobNEWSOccupation

Executives - geriatric care

Editor: bb company for work and education Ltd · daily updated · 28 March 2024

**Content**

Overview . . . . . 2

Current jobs . . . . . 4

Vacancies dynamics . . . . . 10

Imprint, Legal Notice . . . . . 15